



Mill Ridge

Edgware

£850,000

A three bedroom extended detached family residence situated in this popular cul-de-sac just off Stonegrove with views overlooking Stonegrove Park. There is potential for further development (STPP).

The property is within easy reach of Central Edgware (0.35M), Canons Park Jubilee Line Underground (0.7M), Stanmore Jubilee Line Underground (less than 1M) and Stonegrove Park (0.1M) as well as many local schools and places of worship.

Barnet Council Tax Band F.

Viewing

Please contact our Davidson Frost-Wellings Office on 020 8954 8806 if you wish to arrange a viewing appointment for this property or require further information.

- Three bedrooms
- En suite bathroom
- Garden
- Extended kitchen
- Garage
- In the Eruv



3



2



1



E

Floor Plan

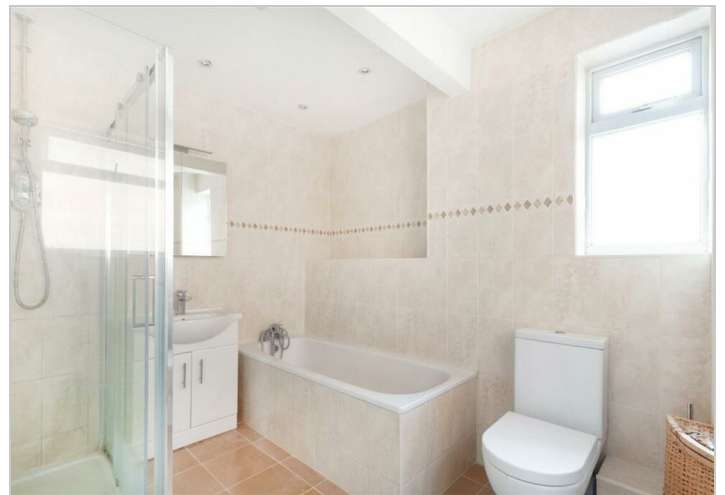


Area Map



Energy Efficiency Rating

	Current	Potential
Very energy efficient - lower running costs		
(92 plus) A		
(81-91) B		
(69-80) C		69
(55-68) D		
(39-54) E	41	
(21-38) F		
(1-20) G		
Not energy efficient - higher running costs		
England & Wales	EU Directive 2002/91/EC	



These particulars, whilst believed to be accurate are set out as a general outline only for guidance and do not constitute any part of an offer or contract. Intending purchasers should not rely on them as statements of representation of fact, but must satisfy themselves by inspection or otherwise as to their accuracy. No person in this firm's employment has the authority to make or give any representation or warranty in respect of the property.